





LUCAS LIFESTYLE
ESTATE
BALLARAT



LEIGHTON

2  1  2  2 

LEIGHTON

2  1  2  2 

BEST OF COUNTRY-STYLED LIVING

Drawing inspiration from country homesteads this home design ticks all the boxes with a stunning layout and luxurious features.

As you enter the home you are greeted by an inviting living room which is generously proportioned and includes space for a study or reading nook.

The gourmet kitchen connects to the dining and undercover alfresco which makes entertaining a pure joy.

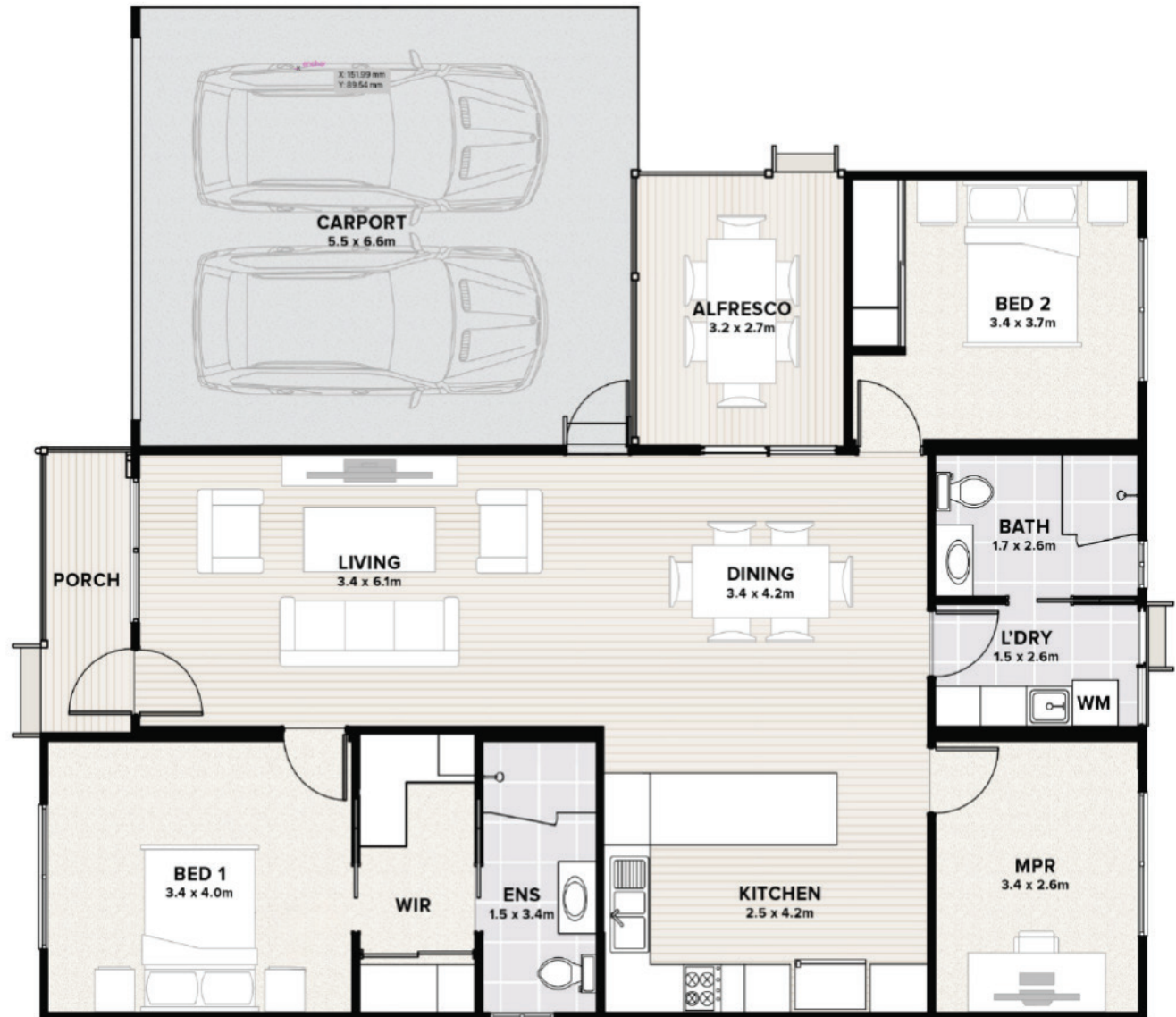
The master bedroom bathed in natural light is full of surprises including a large walk-in robe and generously sized ensuite with double vanity.

A separate laundry and built-in robes in the additional bedrooms give you plenty of storage to complete this thoughtfully designed home.

FLOORSPACE

Area based on external wall footprint

LIVING AREA	113.0m ²
CARPORT	40.1m ²
PORCH	4.3m ²
TOTAL	166.7m ²



[LUCASLIFE.COM.AU](https://lucaslife.com.au)

1300 088 932 | 21 Harris Drive, Lucas VIC 3350

© Lucas Lifestyle Estate Ballarat. Lucas reserves the right to change home design and floorplans at any time without notice. Artist impression only. Please note floorplans and designs are not to scale. Not all items shown are included. Refer to schedule for fixtures, fittings and inclusions. Document is for marketing purposes only. V20230317..01